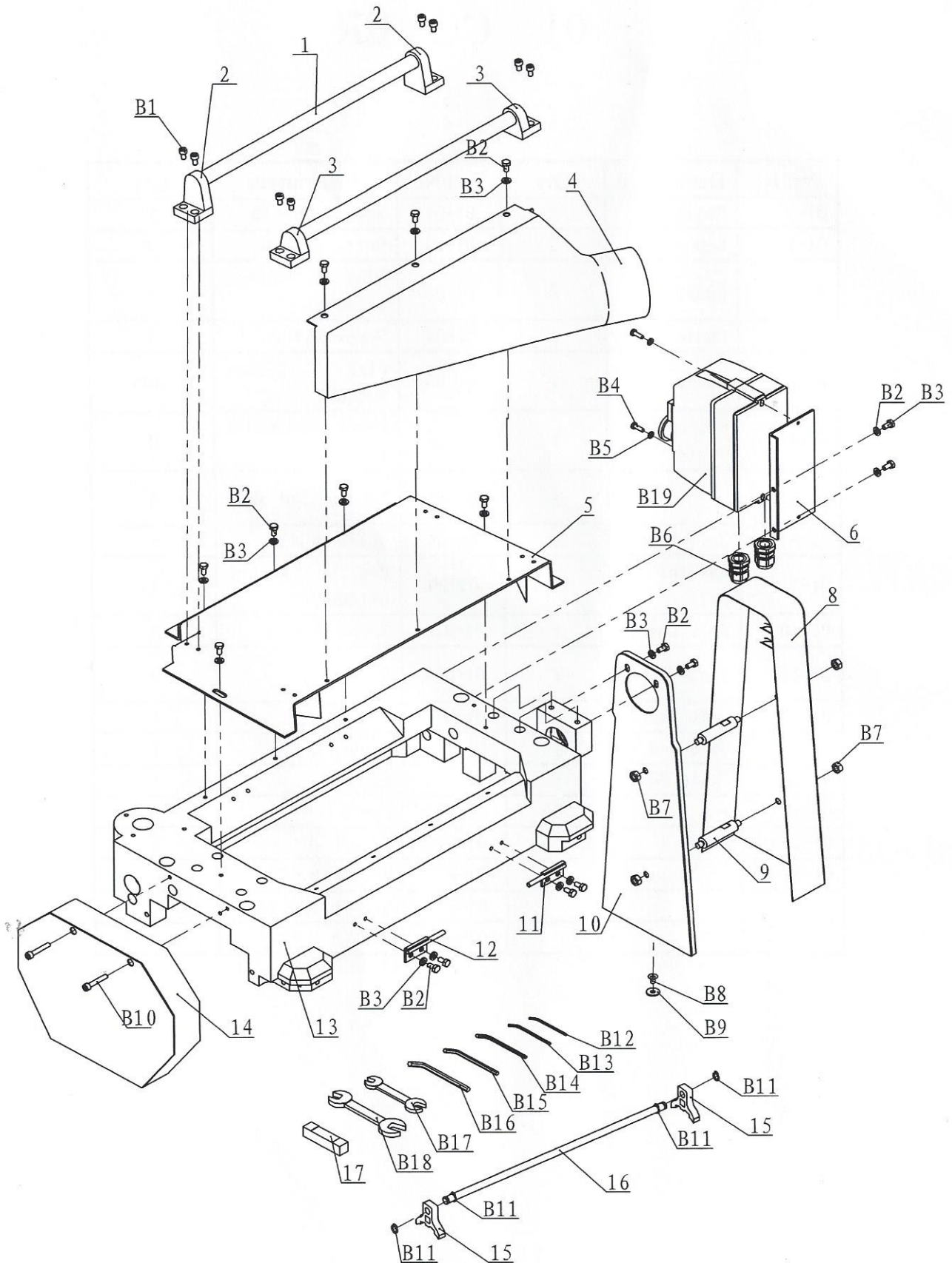


01 COVER

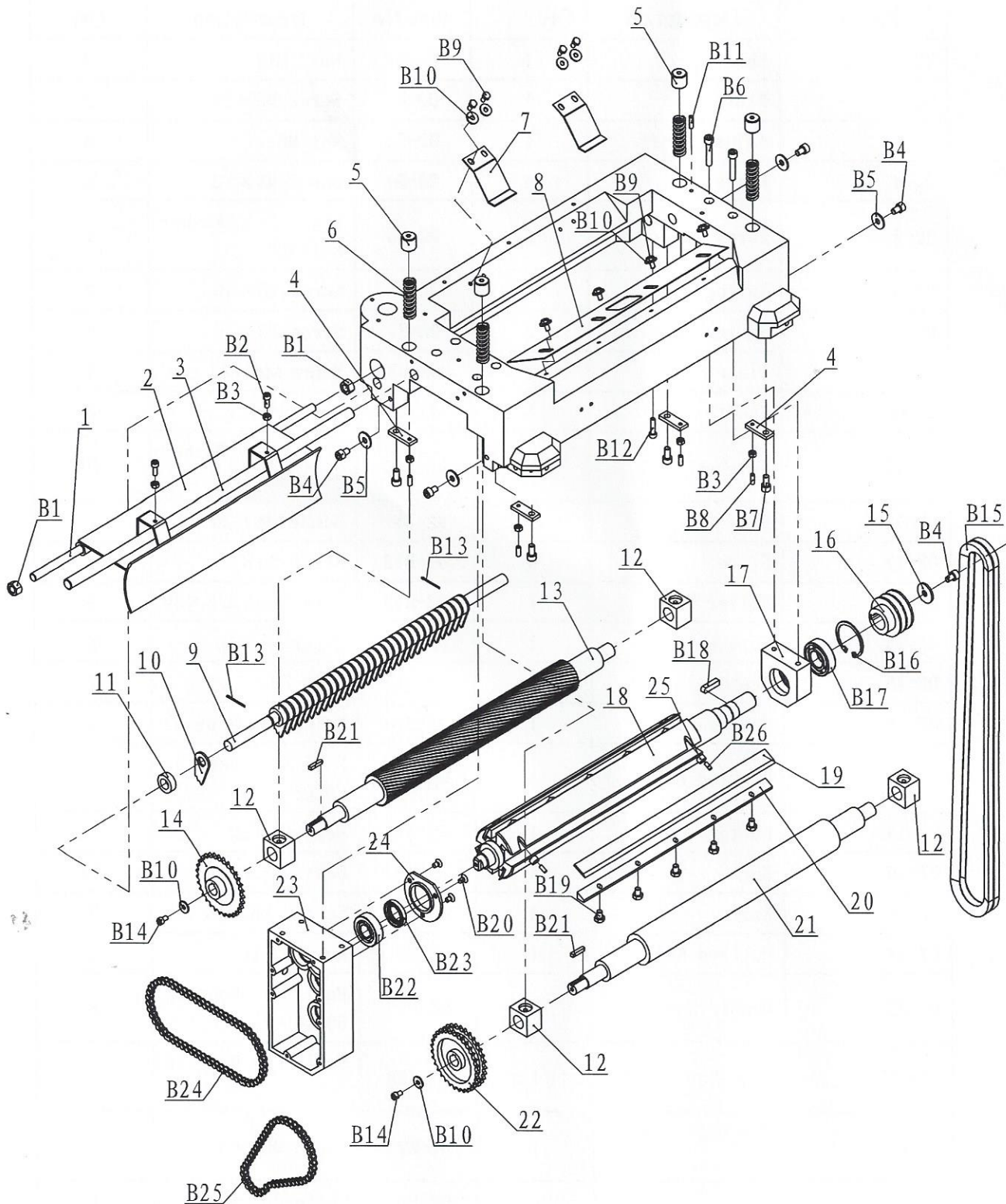


SECTION 5: PARTS LIST AND DIAGRAM

01 COVER

Part No	Description	Qty	Part No	Description	Qty
01-1	Roller	2	01-B1	Screw M6×10	8
01-2	Support	2	01-B2	Bolt M6×12	16
01-3	Support	2	01-B3	Flat Washer 6-140HV	16
01-4	Chute	1	01-B4	Screw M5×16	2
01-5	Cover	1	01-B5	Flat Washer 5-140HV	10
01-6	Switch Plate	1	01-B6	Power Cord M20× 1.5	2
01-7		1	01-B7	Special Nut M8	4
01-8	Belt Cover	1	01-B8	Screw M6×16	1
01-9	Special Belt	2	01-B9	Big Washer 6-140HV	1
01-10	Belt Cover	1	01-B10	Screw M6×35	2
01-11	Right Sheet	1	01-B11	Ring 10	4
01-12	Left Sheet	1	01-B12	Wrench 2.5	1
01-13	Up Stand	1	01-B13	Wrench 3	1
01-14	Chain Box	1	01-B14	Wrench 4	1
01-15	Set Jig	2	01-B15	Wrench 5	1
01-16	Rod	1	01-B16	Wrench 6	1
01-17	Gauge		01-B17	Wrench 8×10	1
			01-B18	Wrench 12×14	1
			01-B19	Switch	1

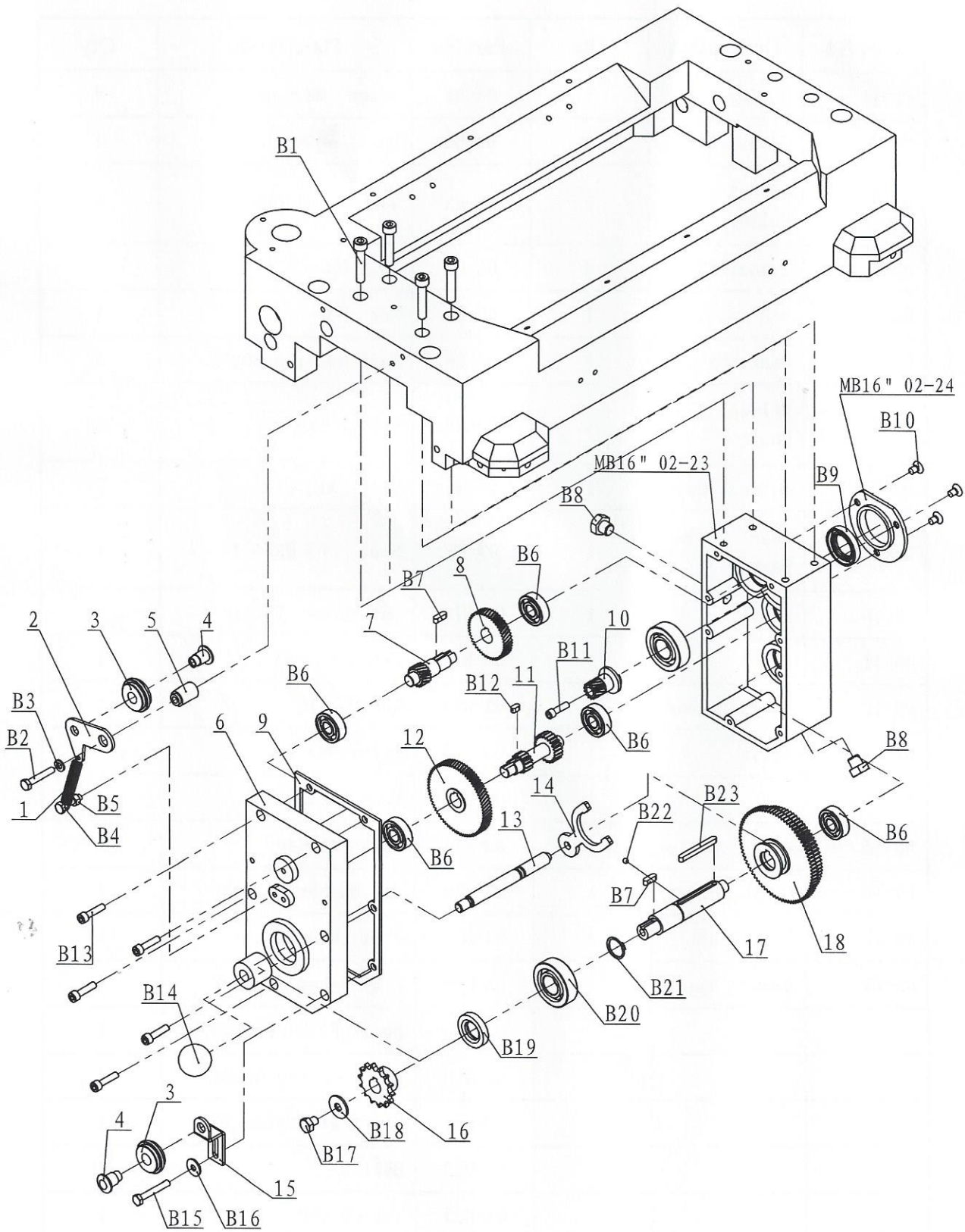
02 CUTTER HEAD



02 CUTTERHEAD

Part No	Description	Qty	Part No	Description	Qty
02-1	Shaft	1	02-B1	Nut M12	2
02-2	Plate	1	02-B2	Screw M6×16	2
02-3	Adjust Shaft	1	02-B3	Nut M6	6
02-4	Plate	4	02-B4	Screw M8×12	5
02-5	Screw	4	02-B5	Big Washer 8-140HV	4
02-6	Spring	4	02-B6	Screw M8×40	2
02-7	Spring Plate	2	02-B7	Screw M8×16	4
02-8	Plate	1	02-B8	Screw M6×16	4
02-9	Shaft	1	02-B9	Bolt M6×12	8
02-10	Ratchet	31	02-B10	Big Washer 6-140HV	10
02-11	Set	31	02-B11	Screw M6×20	1
02-12	Slide	4	02-B12	Screw M6×25	1
02-13	Roller	1	02-B13	Open Shaw 2.5×30	2
02-14	Sprocket	1	02-B14	Screw M6×10	2
02-15	Washer	1	02-B15	Belt 59 "	2
02-16	Cutter Pulley	1	02-B16	Hole With Ring 52	1
02-17	Bearing House	1	02-B17	Ball Bearing 60205	1
02-18	Cutterhead	1	02-B18	Key C8×32	1
02-19	Bar	4	02-B19	Bolt M8×10	20
02-20	Knife	4	02-B20	Screw M6×16	3
02-21	Outfeed Roller	1	02-B21	Key C5×10	2
02-22	Double Sprocket	1	02-B22	Ball Bearing 60204	1
02-23	Gear Box	1	02-B23	Seal (F) B25×40 ×7	1
02-24	Bearing House Lid	1	02-B24	Chain 06B-63	1
			02-B25	Chain 06B-48	1

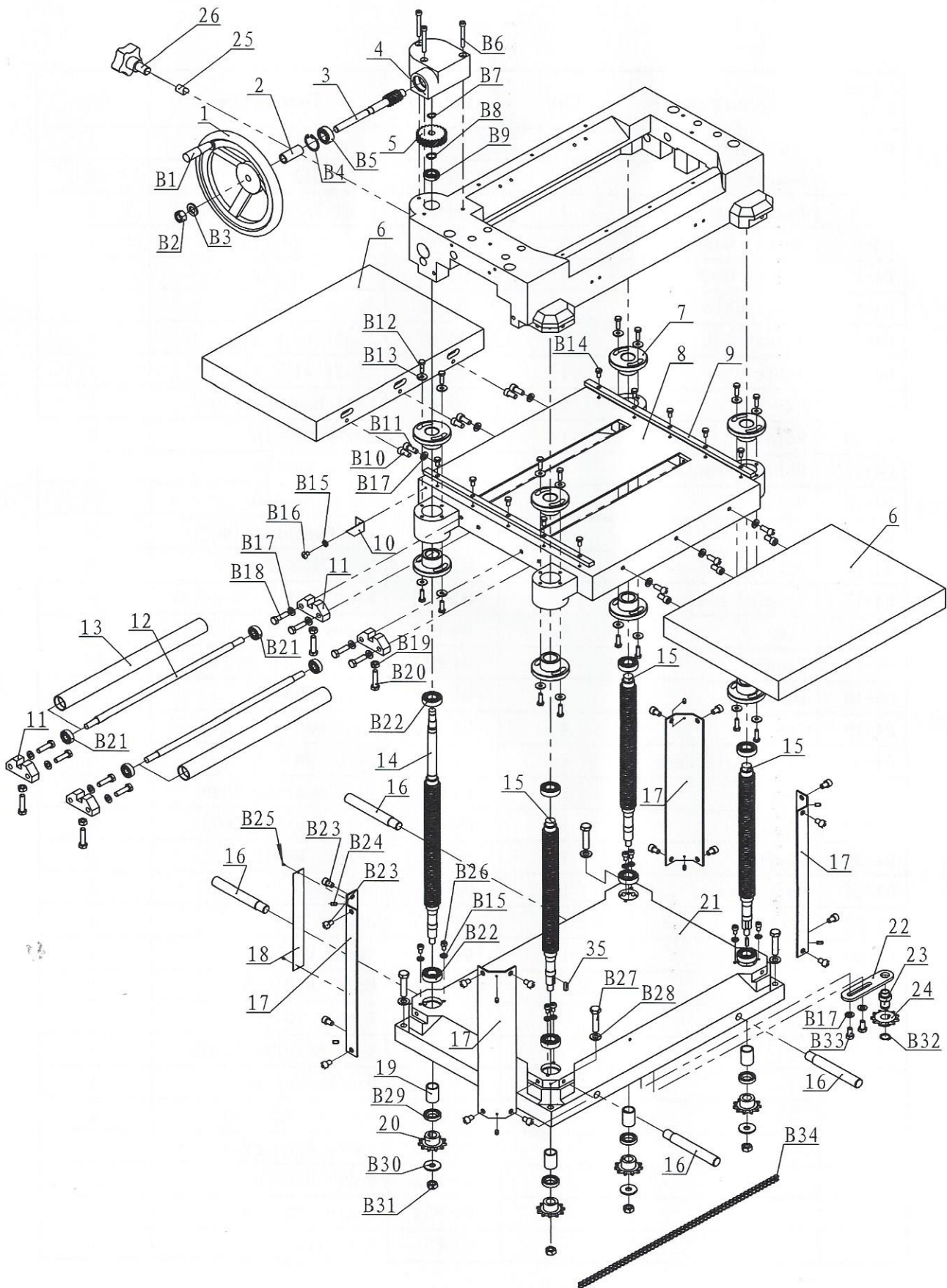
03 GEAR BOX



03 GEAR BOX

Part No	Description	Qty	Part No	Description	Qty
03-1	Spring	1	03-B1	Screw M8×40	4
03-2	Adjust Plate	1	03-B2	Bolt M6×35	1
03-3	Adjust Pulley	2	03-B3	Washer 6-140HV	1
03-4	Adjust Shaft	2	03-B4	Bolt M6×25	1
03-5	Rod	1	03-B5	Nut M6	1
03-6	Gear Box Lid	1	03-B6	Ball Bearing 60201	5
03-7	Helical Gear Shaft	1	03-B7	Key C5×16	2
03-8	Helical Gear	1	03-B8	Bolt M12×10	2
03-9	Gear Box Washer	1	03-B9	Seal (F) B25×40×7	1
03-10	Shaft	1	03-B10	Set Screw M6×16	3
03-11	Shaft	1	03-B11	Screw M6×35	1
03-12	Helical Gear	1	03-B12	Key C5×10	1
03-13	Shaft	1	03-B13	Screw M6×25	5
03-14	Fork	1	03-B14	Knob M12×32	1
03-15	Adjust Plate	1	03-B15	Bolt M6×40	1
03-16	Chain Pulley	1	03-B16	Big Washer 6-140HV	1
03-17	Gear Shaft	1	03-B17	Bolt M8×10	1
03-18	Double Shaft	1	03-B18	Big Washer 8-140HV	1
			03-B19	Seal (F) B 20×35×10	1
			03-B20	Ball Bearing 60204	2
			03-B21	Shaft with ring 20	1
			03-B22	Ball 5	1
			03-B23	Key C5×50	1

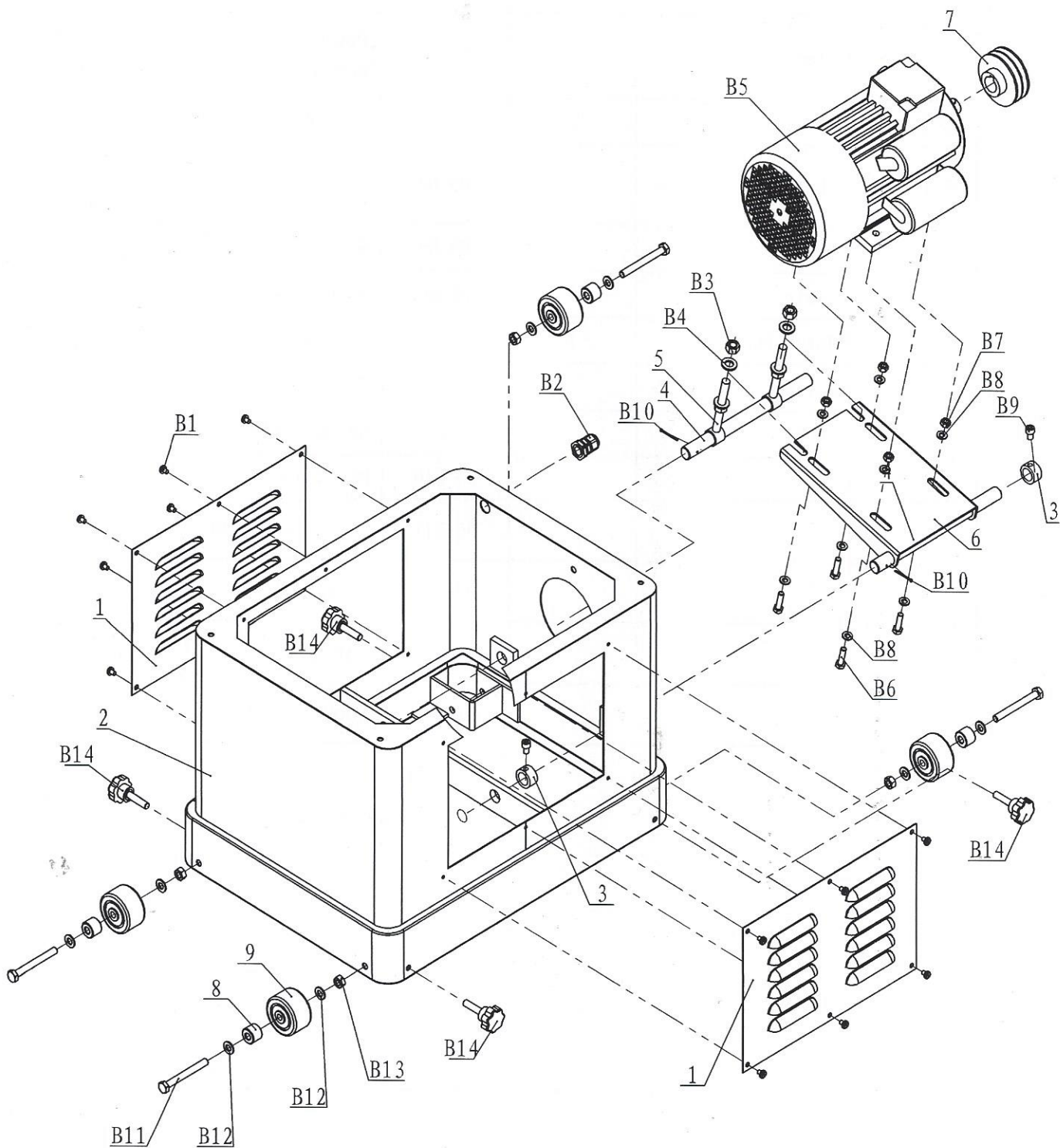
04 TABLE



04 TABLE

Part No	Description	Qty	Par No	Description	Qty
04-1	Hand Wheel	1	04-B1	Knob M8×63	1
04-2	Spacer	1	04-B2	Nut M12	1
04-3	Spir Gear Shaft	1	04-B3	Flat Washer 12-140HV	1
04-4	Spiral Gear Box	1	04-B4	Hole with ring 32	1
04-5	Spiral Gear	1	04-B5	Ball Bearing 6201	1
04-6	Auxi Table	2	04-B6	Screw M6×50	3
04-7	Adjust Nut	8	04-B7	Shaft with ring 12	1
04-8	Table	1	04-B8	Shaft with ring 15	1
04-9	Bar	2	04-B9	Ball Bearing 61902	1
04-10	Point	1	04-B10	Screw M8×16	6
04-11	Roller Bracket	4	04-B11	Screw M8×20	6
04-12	Roller	2	04-B12	Bolt M6×20	16
04-13	Roller	2	04-B13	Big Washer 6-140HV	16
04-14	Special Screw	1	04-B14	Bolt M6×12	10
04-15	Special Screw	3	04-B15	Flat Washer 6-140HV	9
04-16	Lid	4	04-B16	Screw M6×8	1
04-17	Plate	4	04-B17	Flat Washer 8-140HV	16
04-18	Label	1	04-B18	Bolt M8×30	8
04-19	Set	4	04-B19	Nut M8	4
04-20	Adju Chain Gear	4	04-B20	Bolt M8×35	4
04-21	base	1	04-B21	Ball Bearing 6000	4
04-22	Plate	1	04-B22	Ball Bearing 6003	8
04-23	Shaft	1	04-B23	Screw M8*12	16
04-24	Chain Gear	1	04-B24	Pin 5*10	8
04-25	Lock Shaft	1	04-B25	Rivet 2*4	2
04-26	Lock Hadle	1	04-B26	Screw M6*10	8
			04-B27	Bolt M10×45	4
			04-B28	Washer 10	4
			04-B29	Ball BEARING 61903	4
			04-B30	Big Washer 10	4
			04-B31	Special Nut m10	4
			04-B32	Shaft With ring 16	1
			04-B33	Bolt M8×16	2
			04-B34	Chain 06B 140	1
			04-B35	Key 5*16	4

05 BASE



05 STAND

Part No	Description	Qty	Part No	Description	Qty
05-1	Cover	2	05-B1	Screw M6×8	12
05-2	Stand	1	05-B2	Power Nut m20*1.5	1
05-3	Set with motor	2	05-B3	Nut M12	4
05-4	Shaft motor plate	2	05-B4	Washer 10	4
05-5	Screw	2	05-B5	Motor YL90-2	1
05-6	Plate	1	05-B6	Bolt M8×30	4
05-7	Motor Pulley	1	05-B7	Nut M8	4
05-8	Roller		05-B8	Washer 8	8
05-9	Wheel		05-B9	Screw M8×12	2
			05-B10	Pin 2.5×30	2
			05-B11	Bolt M10×90	4
			05-B12	Washer 10	8
			05-B13	Nut M10	4
			05*B14	Knob M8*40	4